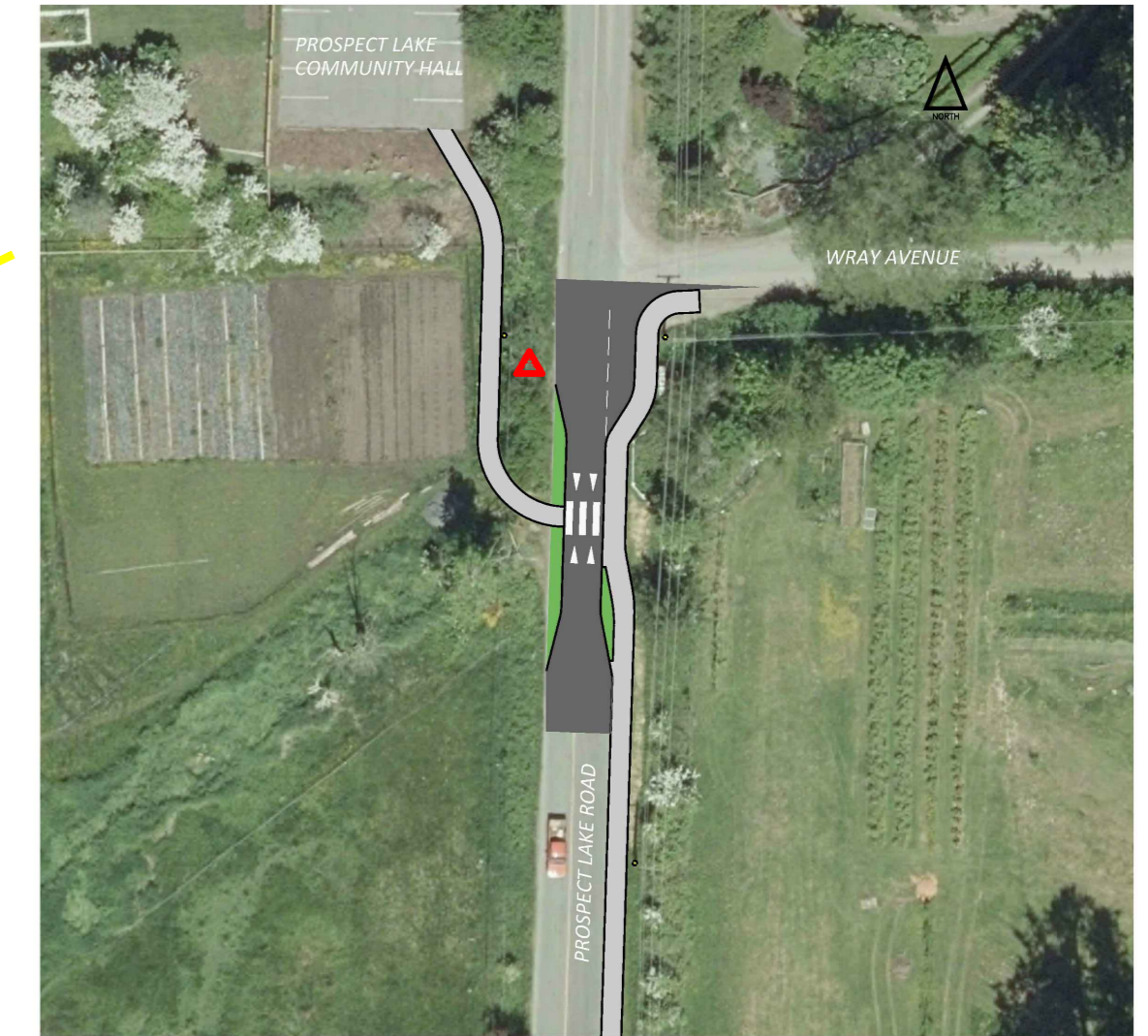


**ONE WAY YIELD POINT ON SPARTON ROAD**



**REVISED CONCEPT INCLUDES:**

PROSPECT LAKE ROAD SIDEWALK – GOWARD ROAD TO WEST SAANICH ROAD

- A NEW CONCRETE SIDEWALK, 2.15M IN WIDTH OR SLIGHTLY NARROWER WHERE CONSTRAINED BY TOPOGRAPHY OR OTHER HARD OBJECTS.
- SIGHT LINES IMPROVED AT THE APPROACHES TO GOWARD ROAD.
- FLEXIBLE BOLLARDS ALONG THE CENTRELINE OF THE ROAD IN CERTAIN AREAS (SHOWN AS RED DOTS) TO CALM VEHICLE SPEEDS. EACH TRAVEL LANE WILL BE A MINIMUM OF 3.0M WIDE.

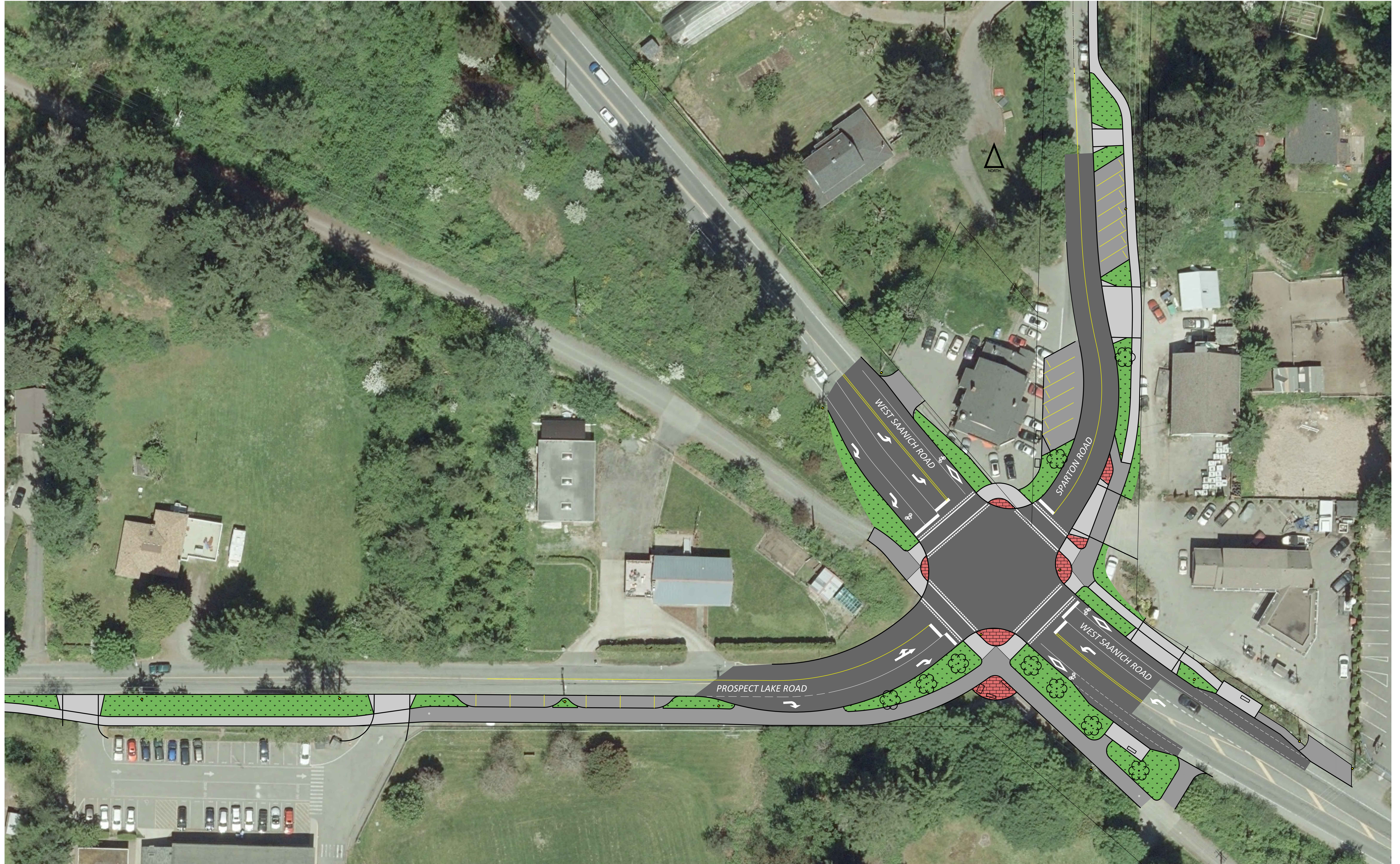
WEST SAANICH – PROSPECT LAKE /SPARTON SIGNALIZED INTERSECTION

- A MINIMUM OF 1.5M WIDE GRASS BOULEVARDS AND 1.8M WIDE SEPARATED SIDEWALKS.
- 3.0M WIDE MULTIUSE ASPHALT PATHWAY CONNECTION FROM SCHOOL TO THE INTERSECTION AND TO INTERURBAN RAIL TRAIL.
- REMOVE 3 AND PLANT 9 NEW TREES.
- ACCESSIBLE BUS STOP UPGRADES EQUIPPED WITH BENCHES, LIGHTING.
- A TOTAL OF 17 PARKING SPOTS FOR PUBLIC USE AROUND THE INTERSECTION.
- BENCH AND A BIKE RACK IN THE REST AREA ADJACENT TO INTERURBAN RAIL TRAIL.
- BIKE RACKS AT 5303 WEST SAANICH.
- FULLY PROTECTED MULTIUSE CROSSWALKS AT ALL APPROACHES.
- PROTECTED SIGNAL PHASING (MAJOR TURNING MOVEMENTS ARE PROTECTED FROM PEDESTRIANS).

SPARTON ROAD SIDEWALK – WEST SAANICH TO PROSPECT LAKE COMMUNITY HALL

- 1.8M WIDE CONCRETE SIDEWALK.
- 3.5M WIDE ONE WAY YIELD POINT ON THE BRIDGE WITH RAISED CROSSWALK TO CALM VEHICLES AND STREET LIGHT TO INCREASE VISIBILITY OF THE CROSSWALK.
- SHORT TERM PARKING SPOT AT THE COMMUNITY MAILBOX.

**CONCEPT**  
March 16, 2020



INSET A

**CONCEPT**  
March 16, 2020



WEST SAANICH – PROSPECT LAKE / SPARTON PROJECT  
CONCEPTUAL PLAN FOR SIGNALIZED INTERSECTION DESIGN

SHEET 2 OF 2  
1:250  
0 5 15m